

REMINDER NEWSLETTER

www.northwoodvale.wa.edu.au
Opened 26 October 1990

Issue 18 - 23rd June 2009

DATES TO REMEMBER

Thurs 25th June	Reports Home
Friday 26th June	School Disco
Tuesday 30th June	Assembly Room 14 <i>Triple P Celebration (K-PP)</i>
Thursday 2nd July	JRock Concert
Friday 3rd July	Term 2 Concludes
Monday 20th July	Pupil Free Day
Tuesday 21st July	Term 3 Commences

FROM THE PRINCIPAL

HUMAN SWINE INFLUENZA

There has been a change in the way the Department of Health has decided to manage the human swine influenza. Based on the relatively mild nature of the disease in most cases the approach from now on is as follows:

There will no longer be any requirement for voluntary exclusion for children and staff returning from the previous countries of concern (Mexico, USA, Canada, Japan or Panama) or Victoria. School closures will cease to be used.

Children, visitors and staff who have flu-like illness should not attend school. When illness is identified during a school day children will be isolated and parents contacted to have your child taken home.

Department of Health advice in relation to flu-like symptoms is available from its website health.wa.gov.au.

Children and adults with severe illness, and those with chronic underlying medical problems such as asthma, heart disease, morbid obesity or diabetes, and women who are pregnant should consult their doctor for specific advice.

Hygiene practices (eg hand washing and coughing etiquette) will be emphasised to help prevent the spread of germs that cause illness, such as human swine influenza.

EFFECT ON STUDENT LEARNING

(follow on from last weeks newsletter)

Not really a surprise but one of the most important factors that translates directly to a student's learning is the relationship the parent has with the school. It is very important that we as parents do get involved in our child's schooling and play an active role in our child's progress.

This means it is extremely important that you do attend such things as assemblies, interviews, read reports carefully and any other opportunities that you have to discuss your child's progress with their teachers. Any time you do have a concern then follow this up with the teacher and clarify what you can do at home to help.

SWIMMING REVIEW

Congratulations to all students for a terrific effort. Many students passed their next stage of swimming and it is full credit to them for their efforts to strive and succeed at these levels.

A review of the time undertaken and cost to the school will be made as these two weeks of swimming do cause a great deal of interruption to the normal curriculum. More news to follow on this!

REPORTS

Please be aware that Semester 1 school reports will be sent home with your child on Thursday 25th June 2009.

Please take this opportunity to discuss with your child his/her progress and to set any goals for next semester.

FROM THE SCHOOL NURSE:

As a follow up to previous week's information on the Health and Hygiene of your child consider the following points:

- Please do not send your child to school if they are unwell especially if they have an influenza like illness ie. Fever and 1 or more of cough, sore throat, runny nose or nasal congestion, and stay away from school until well.
- Simple steps to help prevent spread of ANY germs that can cause illness are:-

-Avoid contact with people who are unwell.

-Cover nose and mouth with a tissue when sneezing or coughing and dispose of tissues after use carefully.

-Frequent handwashing especially after coughing, sneezing, blowing nose ,going to the toilet and before eating.

Any further information or enquiries please don't hesitate to call Bev Brideson your School Health Nurse on 93090808.

JROCK COUNTDOWN

Help!! Urgent!!

Is there an electrician in the house?

We need someone to tag 2 bed lamps this week in preparation for the JRock Production.

Please be aware of the note given out last week detailing all costuming and rehearsal times. **Very important!!!**

There are still some outstanding \$3.00 bus fares, please pay as soon as possible.

2010 KINDY & PRE PRIMARY APPLICATION FOR ENROLMENTS

CALL INTO THE OFFICE FOR YOUR FORM

CLOSING DATE: 24TH JULY 2009

P & C NEWS

UNIFORM SHOP NEWS

The Uniform Shop will be operating in Term 3 as follows:

Week 2 - **Wed 29th July - uniform order forms sent out**

Week 3- **Tues 4th Aug - Uniform Shop Open 8:30am - 9:30am - Second Hand Sale**

Week 4- **Tues 11th & Fri 14th Aug - Uniform Shop Open 8:30am - 9:15am - for fittings & placing orders
Friday 14th Aug – last day for placing Term 3 orders.**

Remember that orders for hats and urgent requirements can be placed in the P&C box in the school office at any time. These orders will be delivered to your child's classroom as soon as possible. Order forms are available on the desk in the front office and there are sample hats hanging above the P&C box should you need to try on sizes.

Should you have any queries, please contact Cathie Lynch on 0448 877 083 or Di Kelly 0407 308 945.

FUNDRAISING COMMITTEE

Casino Day - 28th July 2009



Cost: \$10.00 includes Bus (departing school 9:15am, leaving Casino at 2:15pm) lunch and gaming vouchers.

Mothers, Fathers, Grandparents, Relatives and friends - all welcome. Come and try your luck. Guaranteed a great day out.

Please enclose \$10.00 in an envelope marked CASINO DAY and place in the P & C Box located in the school admin office. For any enquiries, please phone Linden Ing on 9409 9800.

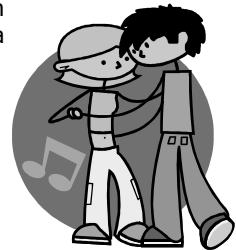
Disco Reminder - 26th June 2009

We will be selling tickets before school in the Undercover Area between 8.30am and 9.00am *Wednesday 24th, Thursday 25th and Friday 26th*. Tickets are \$5.00 each which includes a drink and chips.

Junior Disco 5:00pm - 6:30pm

Senior Disco 7:00pm - 9:00pm

Volunteers needed for supervision Mums, Dads etc, if you can help please phone Karen Malpuss on 0410803619. It would be greatly appreciated.



COMMUNITY NEWS



FLY LIKE A FALCON - NETBALL CLINIC

July School Holidays: Tuesday 7th July & Wednesday 8th July
Tuesday 14th July & Wednesday 15th July

For more information, please collect a form from the school admin office.

CANTEEN ROSTER

*Thurs 25th June
Fri 26th June
Mon 29th June
Tues 30th June
Wed 1st July*

*C.Imrie, W.Sheppard
M.Wood, **Help needed**
L.Faulkner, G. Morgan
J.Prout, Y.Patterson
M.Ellery, J. Goldspink*

